



This month it's a beautiful daisy with a humble name. See page 2.



NCNP SOT News

Native Plant Society of Texas, North Central Chapter Newsletter
Volume 21, Number 7, November 2009

NCNP
SOT

The President's Corner Dawn Hancock

Greetings, members of the North Central Chapter of the Texas Native Plant Society. I have been out gallivantin'. I've been to the 2009 Annual Symposium of the Native Plant Society of Texas titled People, Prairies: Partners. I was not alone: Gailon Hardin, outgoing president of the state organization, attended along with Molly Hollar, Ann Knudsen, Evaline Woodrey, Hester Schwarzer, Jeanne Browning, and Sandra Balch. Others from our chapter attended for at least one day.

Annual conferences are good because one ecoregion is highlighted, and one learns about it in depth. The 2009 conference was held in Wichita Falls, which is kind of the front door to the Rolling Plains and the back door to the Western Cross Timbers. So papers were presented on both. We learned from Jason Singhurst about rare plant communities and rare plants of the rolling plains. As it turns out there are several rare plant communities but few rare plants in the Rolling Plains. Jerry Payne gave us his impression of the Rolling Plains from years of work as the District Conservationist of the USDA's Natural Resources Conservation Services. He calls the plains the "appaloosa" prairie because of its extremely patchy nature. Charlotte Reemts of The Nature Conservancy gave us a talk on using fire to control Old World bluestem, an exotic grass on Fort Hood. One paper of special interest was presented by Amanda Neill, Director of the Herbarium at BRIT. BRIT is putting together an astounding database known as Atrium which will allow access to the herbarium online. It was developed for BRIT's Andes to Ama-

continued on page 2

November meeting

Thursday, November 5, 7:00 pm
Fort Worth Botanic Gardens, Deborah Beggs Moncrief
Garden Center, Orchid Room

Program: Native plant use by indigenous peoples and pioneers. Gailon Hardin, President of the Native Plant Society of Texas, and Dawn Hancock, our Chapter President will present a lively and entertaining exchange.

Visit us at
ncnpsot.org and
txnativeplants.org

Plant of the Month Josephine Keeney

Cowpen daisy, *Verbesina encelioides*, Asteraceae



This lovely but very common flower is many times overlooked by those looking for more sophisticated plants, but never mind, this plant blooms prolifically from April till frost, with the most brilliant yellow flowers that attract butterflies and insects to their soft buttery centers.

This is an annual that self seeds readily, so once you plant it you won't need to plant it again. Cowpen daisy can take the heat

and drought and loves full sun.

Its native range covers a very large portion of North America and goes all the way to South America.

Cowpen Daisy deserves a prominent place in Texas native landscapes and butterfly gardens.



Find more native plant information at www.texasstar.org, a forum for Texas gardeners dedicated to the cultivation and propagation of Texas native plants.

The President's Corner continued from page 1

zon Project, but a new Atrium is being developed for Texas plants.

These are just a sampling of the papers presented. Beyond that were workshops and field trips. I attended a workshop from the San Antonio Chapter. This chapter has developed a certification program for landscapers to accredit them as Native Landscapers. Then I visited a new home development known as The Prairie, a prairie restored from a wheat field. Each home in The Prairie sits on several acres but owners can change only one-tenth of their acreage from prairie to landscaping. And all homes must be built "green".

As you can see, putting on an annual conference requires A LOT of work. The Red River Chapter,

with help from Cross Timbers Chapter, did a fine job. We were entertained with traditional song from a Comanche healer and his Lakota Sioux wife who was also a healer. The carnivores among us feasted on bison. We spent way more money than we intended to at the silent auction. But that's okay because that money supports our education awards.

Our good friends, John Snowden, Rosa Finsley, and David Hurt, received awards. John received the Lynn Lowrey Memorial Award for the propagation of genetically correct native grasses and educating for their use in the horticultural industry. Rosa Finsley received the Charles Leonard Weddle Memorial Award for lifetime achievement in the

field of Texas native plants for her widespread use of native plants in landscapes and for mentoring others to use native plants in landscape design. David Hurt received the Nancy Benedict Memorial Award for an act of conservation for establishing Dogwood Canyon Sanctuary.

NPSOT celebrates its thirtieth year of organization at the 2010 Annual Conference in Denton. Trinity Forks will host the conference with help from North Central Chapter and other area chapters. The theme is Saving Texas One Landscape at a Time. With your help we are going to make it the best conference ever. And, since it is in Denton, everyone can go.

Butterflies Joann Karges

Update on the Monarch Front



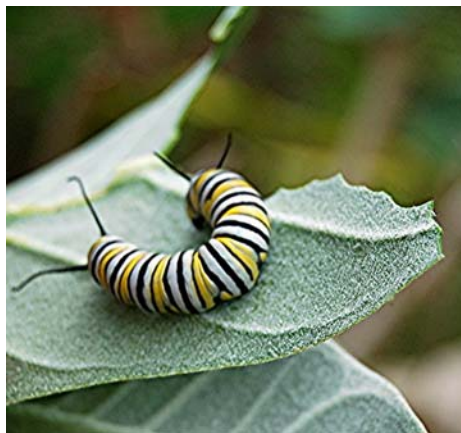
In this part of the world, October is usually prime time for observing the migration of the Monarchs as they wend their way from eastern and midwestern areas of North America. Some years have given us the phenomenon of hundreds of these butterflies overhead at one time, of many nectaring on flowers, and hoards roosting in the trees overnight before picking up and

heading on to their over-wintering grounds in Michoacán, Mexico. But not this year. In fact, sightings of Monarchs around here have been scarce, a few each day, rarely more than a dozen or so. Such a report would be scary and disheartening if we did not have news from elsewhere. For the first time in record keeping of this event, this year the Monarchs went west. They were reported by the thousands from western Kansas, from the Texas Panhandle and farther south. Also this was the earliest report of migrations



ever recorded, as early as August even in West Texas.

Now observers in Mexico are reporting thousands and thousands of Monarchs from Cuatrociénegas (Coahuila) to Saltillo, a larger migration than some people have ever seen, and certainly larger than any migration for many years. If all goes well, that is barring a catastrophic storm or fierce winter, the Monarchs should make a good comeback over the population deficiencies of the past several years. The cycle of scarcity to abundance is to be expected among the Monarchs (as in most of nature's populations) and is considered normal. Good seasonal rains and healthy food plants (milkweed) probably account for this year's productive season. The unusually early migration may have something to do with global warming or, probably, with atmospheric conditions. What so far has not been explained is the western migration. Stay tuned.



Not Exactly a Wildscape, However...



This little building, part of Mission Arlington, got a sustainable landscape makeover about a year ago that features mostly native plants, thanks to a grant from the Arlington Tomorrow Foundation. UTA Landscape Architecture Professor David Hopman donated the plan. Natives include cedar elm, redbud, American beautyberry, Sampson's snakeroot, Lindheimer's muhly, *Salvia greggii*, mealy blue sage, and skeleton-leaf goldeneye.



Minutes: Board Meeting October 1, 2009

Persons in Attendance:

Dawn Hancock, Gailon Hardin, Sandy Balch, Rozanna Francis, Kathryn Darling, Helena van Heiningen and John Bridges

Subjects Discussed:

I. Need for a written policy and procedure governing property owned by the chapter (e.g. Digiframe, digital projector, software)

II. Purchase of Microsoft Publisher 2007 or comparable desktop publishing software owned by chapter but used by the new newsletter editor, should it be necessary to provide this individual with the appropriate software.

III. Purchase of a 10 ft. x 10 ft. "pop-up" tent to be used in outdoor events at a cost of approximately \$170.00 + tax.

IV. Possible purchase of a laser jet printer due to escalating copying costs for flyers and other materials.

Reports:

The Minutes for the September 3, 2009 meeting were accepted as published in the newsletter.

Gailon Hardin presented the Treasurer's Report which was accepted as published, a copy thereof being attached here. Gailon requested that an Audit Committee be appointed.

A report on the 19th Texas Plant Conservation Conference was presented by Dawn Hancock. The conference was attended by Dawn Hancock and Gailon Hardin in Austin.

New Business:

Dawn Hancock outlined the chapter's opportunity to participate with other local chapters to clean up plots located at the Benny

Simpson Research Station in Dallas on November 7, 2009. Dawn will e-blast details for those wishing to volunteer.

Old Business:

The Nominating Committee submitted its slate of proposed officers for 2010. There were no nominations from the floor. A voice vote will be taken at the November, 2009 meeting.

John Bridges announced need for additional volunteers for the Plant Sale on October 8, 2009 at the Botanic Garden and described procedures for setting up and checking in plants to be included the sale.

Charlotte Hughes has four volunteers signed up for the Monster Bash at the Ft. Worth Nature Center on October 3, 2009.

The program concluded with a plant swap and refreshments.

Adjourn.

Next Meeting

Thursday, November 5
7:00 pm
Fort Worth
Botanic Gardens

Gailon Hadin &
Dawn Hancock:

Native Plant Use

Visit us on the Web
at
www.txnativeplants.org

Join the Native Plant Society of Texas!

Become a member of the Native Plant Society of Texas. Membership is open to any individual, family, or organization. Membership is renewable annually and extends for a year from the date we receive your original payment. If you wish to join, please indicate your category of membership, then clip and mail this application with the appropriate remittance to:

Native Plant Society of Texas
PO Box 3017, Fredricksburg, TX 78624
830-997-9272

<input type="checkbox"/> Student	\$15	<input type="checkbox"/> Couple/Family	\$40
<input type="checkbox"/> Senior Individual (65+)	\$20	<input type="checkbox"/> Group	\$50
<input type="checkbox"/> Senior Couple (one 65+)	\$30	<input type="checkbox"/> Patron	\$100
<input type="checkbox"/> Individual	\$25	<input type="checkbox"/> Benefactor	\$250
		<input type="checkbox"/> Supporting	\$500
		<input type="checkbox"/> Corporate Sponsor	\$1000
		<input type="checkbox"/> Lifetime	\$1000

Name: _____
 Address: _____
 City, State, Zip: _____
 County: _____
 Phone: _____
 Chapter Affiliation: North Central Chapter
 e-mail: _____

The North Central Texas NPSOT News

is a monthly publication of the North Central Chapter of the Native Plant Society of Texas.

For changes of address or information about contributing to the newsletter, please contact the newsletter editor.

The deadline for submitting articles for inclusion the newsletter is the 15th of every preceding month.

John Darling, Editor
817-274-1077
ldarling@sbcglobal.net